

Kanagawa Children's Medical Center



Our philosophy

We provide medical care services of highest quality for the recovery of children's health and the promotion of their welfare.

Our mission

We make efforts together to create hope and a happier future for children and their families.



Kanagawa Prefectural Hospital Organization

Kanagawa Children's Medical Center

Overview

Kanagawa Children's Medical Center (KCMC) was established in 1970 as a highly specialized medical center for children. The center consists of the General Hospital (329 beds) and the Institute for Disabled Children (90 beds). The center provides a comprehensive and highly specialized health care system to respond to the needs of children with illness or disability, by collaborating with specialized physicians of the hospital, nursing staff, and allied health care professionals.

The hospital has a total of 12 wards: 10 Pediatric Wards (such as ICU, HCU/Emergency, Clean Ward, and Psychiatric Ward), a Neonatal Ward, and a Maternity Ward. Prefectural Yokohama Minami School for Children with Health Impairment (including children with constitutional weakness) is located within the center where hospitalized children are enrolled. Because the works at KCMC were highly evaluated, the center was nominated as one of the 15 nationwide institutions for Designated Hospital for Children's Cancer in February 2013. We will continue to provide the best medical services for children and to promote highly advanced medical treatments and clinical research.

Policy

1. Greatest importance to the life and safety of the patients
2. Medical services that respect the patients and their families
3. Implementation of highly specialized and advanced medical treatments and active participation in clinical research
4. Provision of a medical and educational environment for children in accordance with their development
5. Education and trainings for medical, nursing, and social welfare staffs who are involved in perinatal and pediatric medicine
6. Promotion of perinatal and pediatric medicine by collaborating with the regional health and welfare resources
7. Improved effectiveness and transparency in hospital management and information disclosure



The Children's Charter

1. We create an environment where children can feel safe while being treated.
2. We will enable the family to participate actively in the child's treatment.
3. The children and their families, given the full explanation, have the right to participate in the decision making of their own physical condition and treatments; they will also be protected from unnecessary medical treatments and/or examinations.
4. The children have the right for palliative care to alleviate physical, psychological, and social pains.
5. The children and their families will be given detailed explanation in accordance with their age and understanding.
6. The children will be taken care by staffs trained to respond to the physical, emotional, and developmental needs of the patients and their families.
7. The children will be provided with education and entertainment suited to their age and physical condition.
8. The privacy of the children and their families is protected.
9. The follow up on the children's care is taken into consideration.





Clinical Departments

General Internal Medicine, Emergency Medicine, Critical Care Medicine, Hematology/Oncology & Regenerative Medicine, Endocrinology & Metabolism, Infectious Disease & Immunology, Nephrology, Genetics, Blood Transfusion, Allergy, Neurology, Cardiovascular Medicine, Surgery, Orthopaedic Surgery, Rehabilitation Medicine, Plastic and Reconstructive Surgery, Neurosurgery, Cardiovascular Surgery, Dermatology, Urology, Ophthalmology, Otolaryngology, Radiology, Dentistry, Anesthesiology, Pathology, Child & Adolescent Psychiatry, Neonatology, Maternal Medicine, Obstetrics & Gynecology

Departments of Medical Technology & Developmental Supports

Radiological Technology, Clinical Laboratory, Pharmacology (Pharmacy), Nutrition, Psychological Treatments, Speech and Language Therapy, Physical Therapy, Occupational Therapy

Medical Information Network Office

Medical records, cancer registration, general medical information system, and hospital LAN system are constructed & controlled.

Patient Safety Management Office

Patient Safety is promoted by organizing rules, collecting data, and transmitting information.

Infection Control and Prevention Service Office

Safe hospital environment is pursued and actions are taken to prevent the spread of hospital and community-acquired infections.

Palliative Care Promotion Office

Supportive measures are taken to alleviate physical, psychological, and social pains of patients and families; support and understanding from regional medical care facilities are promoted.

Department of Maternal & Child Health

Patient and Family Support Division

Regional Medical Service Support Office
Medical Welfare Consultation Office
Discharge/Home Medical Care Support Office

Regional Healthcare Promotion Division

Maternal and Child Health Promotion Office
Childhood Cancer Consultation Office

We give advice to the families regarding medical treatments. We collect and transmit information on child medical care and welfare. By sharing these information with regional medical professionals and the public, we support and aim for further improvement of home medical care. We also provide educational programs for regional medical professionals, nurses, and public health care staffs.

Clinical Research Institute

Research activities are organized and presented here, and clinical studies are promoted. The library provides not only academic books and articles for medical professionals but also books for children and families in the outpatient clinic.

Department of Nursing

The nursing department consists of outpatient, 12 inpatient wards, central operation room, 2 institutes for disabled children, and nursing education. Educational programs are made to foster nurses.

Institute for Physically Disabled Children

The institution provides education to children with disabilities of the limbs and/or deformities of the spine, who are under medical treatments (surgery and rehabilitation).

Institute for Children with Profound Multiple Disabilities

Under medical treatments, children with severe mental and physical disabilities live in this institution.

Administration Department

The office consists of General Affairs Division, Management & Planning Division, and Medical Affairs Division.



At Kanagawa Children's Medical Center (KCMC), we treat patients aged 15 years old or younger and patients from obstetrics/gynecology and maternal medicine. A letter of referral from your family doctor, your nearest medical institution, or a public health center is required and an appointment should be made accordingly (except for emergency).



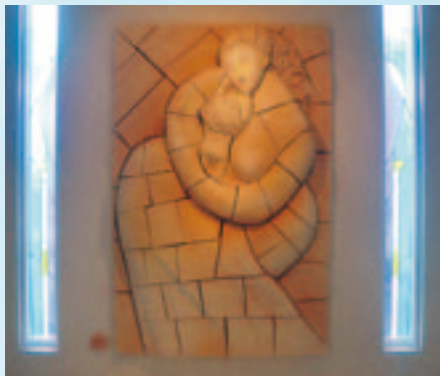
Outpatient library

There is a library for children and their families on the first floor of the main building. Books on diseases, autobiography and/or biography of people with illnesses, reports from patient's meetings, social welfare related articles, and children's books are found here. There are volunteers who will help you find books or information you need. There is also a small play area for children.



Amenities

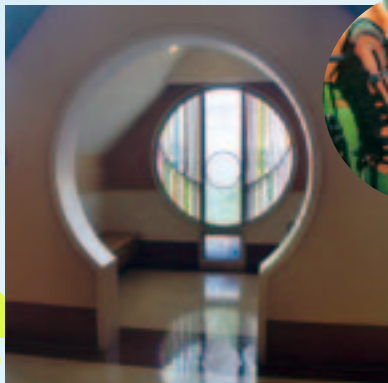
In order to create a comfortable and friendly environment for children and their families, many pieces of artworks are decorated in the general wards and corridors of the outpatient clinics in the main building.



Educational tools, playground equipments, and children's furniture are arranged in the play-area of the outpatient clinic and study/play rooms of each ward. These amenities have been organized by donations from individuals and funds.

Some examples of the art works are:

stained glass windows in the corridor of nursing corner,



relief and stained glass in the prayer room, art works in the corridor of wards and outpatient clinics, originally-designed benches and stools in the outpatient waiting areas.



Genetic Counseling and Family Support Center

This is a counseling center, opened in April 2013, for patients and their families with genetic or congenital diseases. Specialized physicians, genetic counselors and nurses are present to support and give advice. No letter of referral is necessary.



Prefectural Yokohama Minami School for Children with Health Impairment

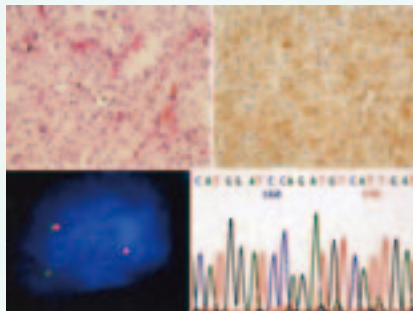
(including children with constitutional weakness)

The school is located within the hospital complex. Special considerations are made, such as bed-side learning and private or small-group lessons, depending on the children's medical condition and/or learning levels. There are also sports day, cultural festivals, and school trips.



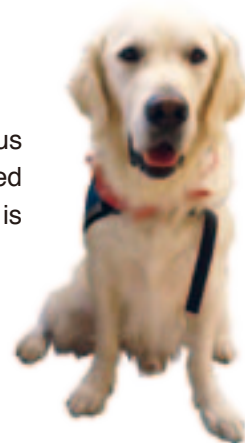
Clinical Research Institute

The institute consists of 6 divisions: Epidemiology Research Division, Clinical Research Support Division, Genome Research Division, Pathophysiology Research Division, Pathology Research Division, and Library. By mutual education and cooperation from members of various divisions, medical research activities are organized and promoted.



Facility dog “Bailey”

Bailey is a full-time facility dog trained to accompany children to various medical tests and rehabilitation. He works with a handler (clinically trained nurse). He relieves children's anxiety and gives hope and courage. He is a healer not only to children but also to their families.



Public Lecture

As a highly specialized children's hospital, we experience various intractable diseases. From 2002, we periodically hold public lectures on highly requested themes regarding children's illness, treatment, and care, inviting staff members as a speaker.

Volunteer activity

Orange Club is a group of volunteers that organizes various activities (homemade goods, sewing, story-telling, etc) in both the outpatient clinics and inpatient wards. At present, there are approximately 300 volunteers in the group.



Peer supporter (Peer support system)

Consultation and advice are given by parents and guardians who have the experiences of bringing up children with diseases and/or disabilities.

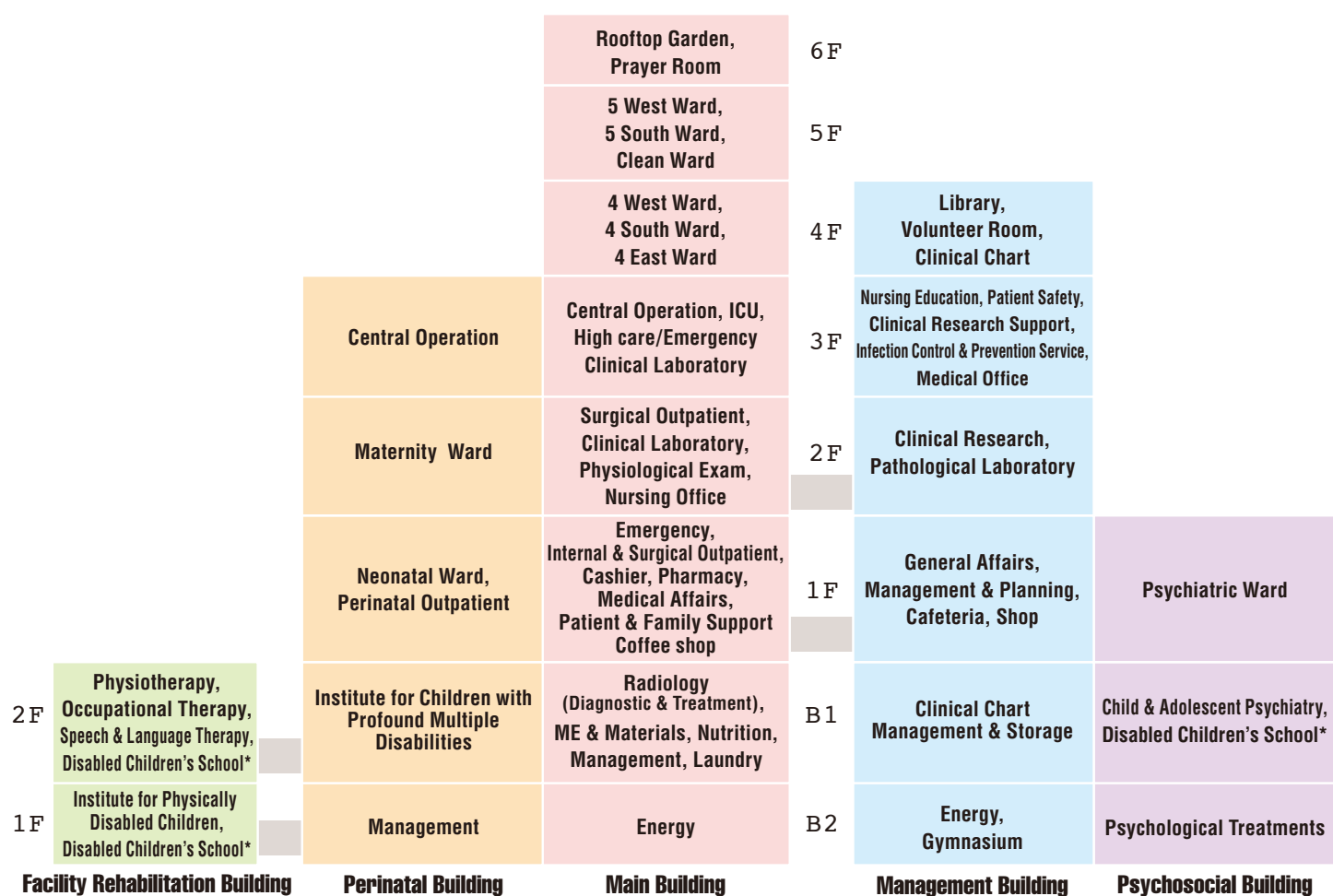
■ Tuesday – Friday: 10:00am – 3:00pm

■ Location: Main Building 1F, Study Room/Library

Designated Hospital for Children's Cancer

Our center was appointed by the Ministry of Health, Labour and Welfare as one of the nationwide institutions for strategically-based pediatric oncology in February 2013. These institutions are aimed to provide highly specialized medical treatments and care in a friendly and safe environment for children and their families. The patients are centered at these institutions based on the "Basic Plan to Promote Cancer Control Programs" which was agreed at the Cabinet meeting in June 2012. We cooperate with other institutions and continue to provide the highest quality medical services.

Buildings Layout



* Yokohama Minami School for Children with Health Impairment (including children with constitutional weakness)

Wards		Number of beds	Details
Main Building	5 West	30	Medical ward for infants, school children and short stay
	5 South	30	Medical ward for infants and short stay
	Clean Ward	15	Wards for bone marrow transplants, chemotherapy
	4 West	30	Medical and Surgical wards for school children, adolescents and short stay
	4 South	30	Surgical ward for infants and short stay
	4 East	30	Surgical ward for infants, school children and short stay
	ICU	8	Intensive Care Unit
	HCU/Emergency 1	16	High care ward (Emergency, post-IUC, etc)
	HCU/Emergency 2	27	High care ward (Emergency, post-IUC, etc), Internal and Surgical wards
Psychiatric Ward		40	Child and adolescent psychiatry ward
Perinatal Building	Maternity Ward	30	Gynecology ward (including 6 beds for MFICU)
	Neonatal Ward	43	Neonatal ward (including 21 NICU)
Total number of beds in the Hospital		329	
Institute for Disabled Children		90	Institute for Physically Disabled Children 50 Institute for Children with Profound Multiple Disabilities 40
Total number of beds in the Center		419	

House of Lila

Accommodation for patients & their families

House of Lila is an accommodation facility for patients and their families. It is organized and managed by a non-profit organization Smile of Kids and volunteer members, in collaboration with KCMC, in the hope of alleviating the family's financial burden and supporting the family psychologically. Day nursery for siblings is available at the House.



Address: 4-1124-2 Mutsukawa, Minami-ku,
Yokohama, Kanagawa 232-0066

Phone: 045-824-6014

Facilities

Cafeteria

Location: 1st Floor, Administrative Building

Weekdays:

Breakfast 7:30am – 10:00am

Lunch/Dinner 11:00am – 8:00pm
(last order 7:30pm)

Weekends & Holidays:

Lunch 11:00am – 3:00pm

Dinner 4:00pm – 6:30pm (last order 6:00pm)



Shop (LAWSON)

Location: 1st Floor, Administrative Building

Daily: 8:00am – 9:00pm



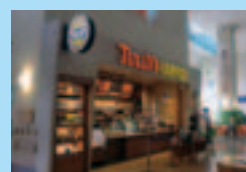
Coffee Shop (TULLY'S COFFEE)

Location: 1st Floor, Main Building

Weekdays: 7:30am – 7:00pm

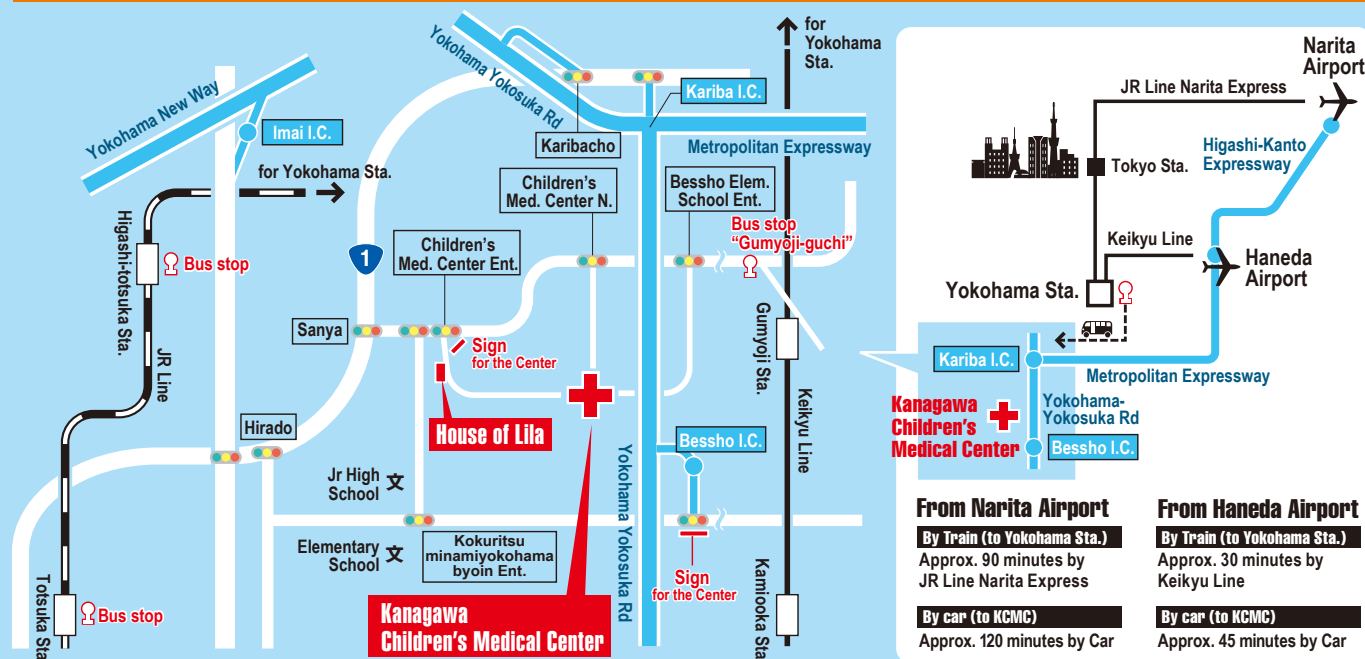
Saturday: 9:00am – 6:00pm

Sunday & Holidays: 10:00am – 5:00pm



Access

Please use the public transportation as much as possible.



Bus: Get off at bus stop “Kodomo Iryo Center Mae” (meaning front of Children’s Medical Center)

From JR Line “Yokohama” station, east exit
● “横 44” bus route to “Totsuka Eki Higashi-guchi”

From JR Line “Higashi-totsuka” station, east exit
● “東 01” bus route to “Idogaya Shimocho”

From JR Line “Totsuka” station, east exit
● “横 44” bus route to “Yokohama Eki Higashi-guchi”
● “戸 25” bus route to “Kodomo Iryo Center”

From Keikyu Line “Gumyoji” station
proceed to bus stop “Gumyoji-guchi” (3 minutes walk)
● “井 10” bus route to “Kodomo Iryo Center”
● “東 01” bus route to “Higashi Totsuka Eki Higashi-guchi”
● “横 44” bus route to “Totsuka Eki Higashi-guchi”

Illustrations: Shinsuke Yoshitake